



EXCLUSIVE TOUR

CLASSIC CHERRY BLOSSOM TOUR 2025

Sat 22nd March - Fri 4th April 2025

From \$11,200 Per Person Twin Share



TOUR DESCRIPTION



13 Nights / 14 Days

Begins: Saturday 22 March 2025 in Tokyo

Ends: Friday 4th April 2025 in Kyoto



\$11,200pp - Twin Share

(Single Supplement - \$2,500)

Inclusions



Daily Breakfast, 8 Lunches
& 4 Dinners



13 nights in
quality accommodations



Private Tour Leader
& guides in Japan



Transfers, trains, tours and entrance
fees listed on the tour



Forwarding of one
item of luggage on 2 occasions

Exclusions: International or domestic airfares / Entrance fees, meals & beverages not shown in itinerary

Highlights

Highlight! Enjoy Tokyo's outstanding sites against a stunning backdrop of Mt. Fuji

Highlight! Gaze upon Mt Fuji from your Ryokan room in Hakone and experience a traditional kaiseki dinner

Highlight! Experience the speed and efficiency of Japan's shinkansen as you reach far-flung destinations in mere hours

Highlight! Spend a day in Kyoto - renowned for its Nishiki food market, malls and temples and shrines

Highlight! Learn about each area with our expert local guides who were born and raised in the areas they guide you.

Highlight! Explore several UNESCO World Heritage sites



Your Japan Holidays Tour Leader - Mrs Juliane Suzuki

Juliane spent almost 20 years living and working in Japan as an interpreter before moving back to Australia in 2015 and joining the Japan Holidays team. Travelling extensively throughout Japan and living in different regions of the country with her Japanese husband and bi-cultural children has given Juliane a really unique insight into this culture and lifestyle that few foreigners get to experience. Juliane loves being able to utilise her language skills and share her knowledge of Japan with clients to ensure they have the best possible experience during their time in Japan.

ITINERARY

22nd March - 4th April 2025

1 TOKYO Arrival

Arrive at Tokyo's Narita or Haneda International Airport. After clearing customs, you'll be met by a meet n' greet assistant who will escort you to a shared shuttle bus to your hotel. Upon arrival at the hotel, your Japan Holidays' Tour Leader, Juliane Suzuki, will be there to greet you and help settle you in. Juliane will remain with you for the entire tour.

Accommodation: The Gate Hotel Tokyo (4 nights)

-
-
-

Tokyo *Highlight!*



2 Full Day TOKYO

Today we have a Full Day Tour of Tokyo with our local expert guide to show us all the must-see sights and some hidden gems as well. This evening Japan Holidays will host a **Welcome Dinner** at a local restaurant.

B
L
D

Kamakura



3 Full Day KAMAKURA

Today we visit the ancient Capital of Kamakura for a Full Day Tour. We visit the historical sites and a serene bamboo grove to revitalise ourselves with an authentic cup of matcha tea.

B
L
-

4 Morning Tour TOKYO

With so much to see and do in Tokyo, we've added another morning tour with one of our expert local guides. The afternoon will be spent at your leisure or shopping till you drop.

Note: Your suitcase will be forwarded to Kanazawa this evening, so pack some essentials for the next three days.

B
-
-



5 TOKYO to HAKONE

This morning we travel to the hot springs town of Hakone, via **bullet train**, where we will have 2 nights to enjoy the area and gaze upon the icon **Mt Fuji**. Our ryokan is situated right on Lake Ashi, giving you a view of the magnificent mountain from your room! After dropping our bags, we will walk in the footsteps of merchants, lords and princesses along the Old Cedar path in Hakone, which is part of the route that connected Kyoto & Tokyo (Edo) during the Edo period. We will also visit Hakone Shrine and there will be time to shop for local souvenirs as well. Tonight, we enjoy a traditional Kaiseki dinner.

Accommodation: Ryokan Ryuguden, Lake Ashi Hakone

B
-
D

Cedar Avenue

Highlight!



6 HAKONE

Today we get to explore more of Hakone with our **Private guide** via chartered bus. A private tour of Owakudani, the volcanic area with magic views of Mt Fuji, followed by lunch and finally a wonderful demonstration of how the unique puzzle boxes of Hakone are made. Time for some shopping before heading back to our Ryokan to soak in the hot springs before dinner.

Accommodation: Ryokan Ryuguden, Lake Ashi Hakone

B
L
D

Highlight!



Kaiseki Cuisine

7 HAKONE to KANAZAWA

We say goodbye to Hakone this morning and some wonderful memories of Mt Fuji. Two high-speed **bullet trains** will have us in Kanazawa by early afternoon, where we have 3 nights.

Accommodation: My Stays Premier, Kanazawa (3 nights)



B
-
-

8 KANAZAWA

Our **private guide** will take us on a tour of the must see sights in Kanazawa via **chartered bus**. Enjoy a relaxing day exploring historical **Kanazawa Castle**, the enchanting **Kenrokuen Garden**, **Higashi-chaya** Geisha district and the **Samurai houses**. One of the finest landscape gardens in Japan, Kenrokuen will be bursting with Cherry Blossoms for spectacular photos!

Note: Suitcases will be forwarded to Kyoto this evening.



B
L
-

9 SHIRAKAWA-GO & TAKAYAMA

This morning we travel via **chartered bus** to Takayama first for some shopping in the morning markets before walking through the old preserved streets of Sanmachi. We then take the scenic route to the World Heritage Listed village of Shirakawa-go, famous for its unique Gassho-zukuri styled farmhouses. After lunch, we'll visit a sake brewery and try our hands at traditional paper 'washi' making before heading back to Kanazawa.



B
L
-

Shirakawa-go

Takayama

10 KANAZAWA to KYOTO

We depart for Kyoto mid-morning, taking a bullet train and then the famous **thunderbird train** to Kyoto. The afternoon is yours to relax and explore on your own or you may wish to do some extra activities such as a tea ceremony or cooking class.

Accommodation: Hotel Intergate Shijo Shinmachi (4 nights)



B
-
-

11 KYOTO

Our Day Tour of Kyoto by private bus includes all the must-see locations in Kyoto from the iconic temples of **Kiyomizudera** and the Golden pavilion of **Kinkakuji** to the beautifully preserved streets around Ninenzaka and the tranquil rock garden of Ryoanji. All surrounded by magnificent cherry blossoms, it's truly a beautiful day!!



B
L
-

Kyoto

12 KURASHIKI & OKAYAMA

Travelling south via bullet train today, we visit Kurashiki and Okayama. Known for its historical quarter with centuries-old buildings and beautiful canals, Kurashiki is where we will spend the morning, followed by an afternoon in nearby Okayama at the famous Korakuen gardens and Okayama Castle.

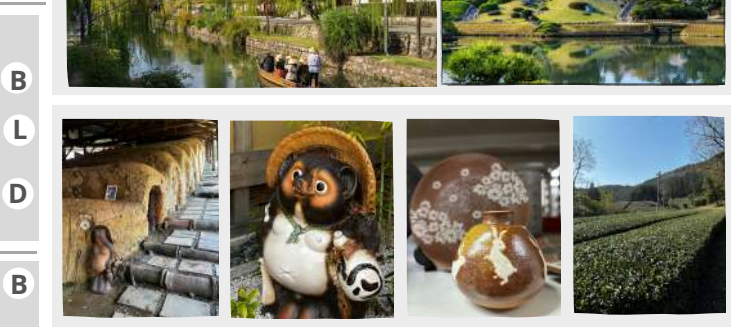


B
L
-

Kurashiki & Okayama

13 SHIGARAKI

We escape the crowds today via chartered bus into the countryside to Shigaraki, which is Japan's oldest pottery producing area and the birthplace of the tea ceremony in Japan. We visit a tea plantation and learn how Japan's first organic green tea plantation was born. A visit to the Miho museum followed by the unique kilns of Shigaraki and some essential shopping time before heading back to Kyoto for our Farewell Dinner.



B
L
D

14 KYOTO - Departure Day

Departure day - After breakfast, Juliane will assist you with your transfers for further travel in Japan or your flight home.

B

End of Tour.... *Sayonara!*

Contact us

Call: + 61 2 6674 4185
 Email: info@japanholidays.com.au
 Website: www.japanholidays.com.au
 Address: P.O. Box 1175, Kingscliff NSW 2487 Australia